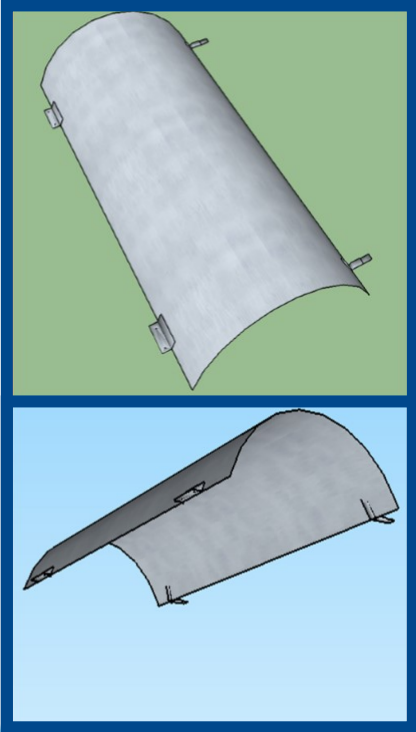


CLEAN-OUT DOORS



Whether you want to buy from our standard design options or you have us fabricate for your specific application, US Duct is a great choice. We will build it accurately, and delivery quickly and keep it on budget.

Clean Out access panels are provided as per specs to allow for the removal of debris or sediment without disassembly of the duct system.

Pipe Size (dia.)	Hole Size	Door Size	Number of Latches	Gauge
3" – 6"	4" x 6"	6" x 8"	1	16
7" – 10"	6" x 8"	8" x 10"	2	16
11" – 18"	8" x 10"	10" x 12"	2	16
19" – 32"	10" x 12"	12" x 14"	2	14
32" – 47"	12" x 14"	14" x 16"	2	14
48" and UP	16" x 18"	18" x 20"	2	14

Cleans are constructed:

- Standard Clean-Out placed 12" from top of pipe
- 1" wide gasket around perimeter of door interior, available in Buna N (Nitrile), EDPM, Silicone/Red Hi-temp, or sponge foam material.
- Standard overlap is 1" on each side (add 2" to length and width of opening size)
- Available with smooth inside, option gasket or plug style.



Double Latch Clean-Out Door

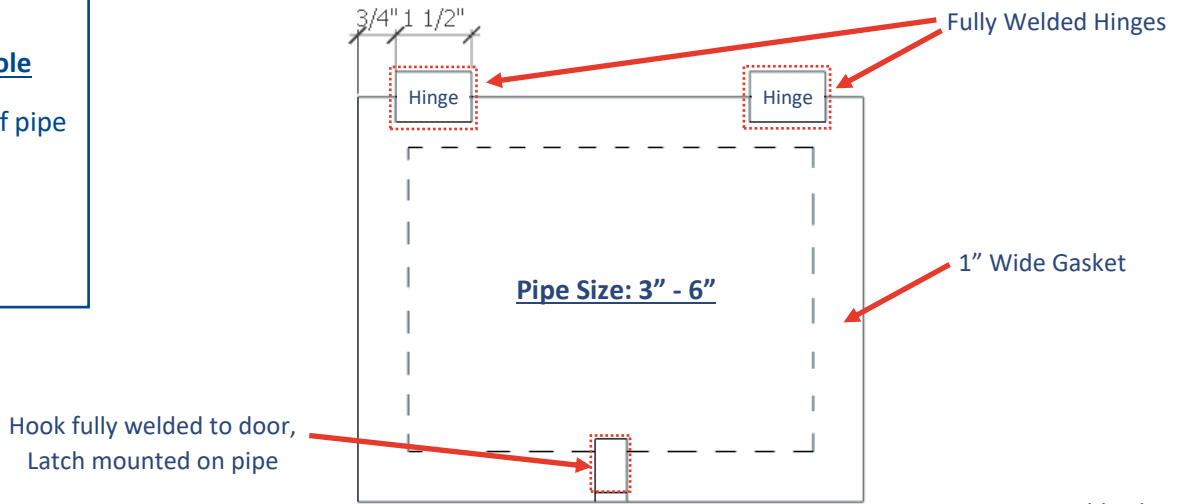


CLEAN-OUT DOORS

MANUFACTURING SPECIFICATIONS

Standard Hole

12" from top of pipe



Door can be supplied to be mounted in the field.

