



The Ultimate Seal®

Save Time. Save Money.

[www.us-tubing.com](http://www.us-tubing.com)

The Ultimate Seal®

## The FAST and EASY Modular Clamp-Connect System

US Tubing, our Clamp-Connect system is a modular, laser-welded system that is fast and cost efficient to use. The components (branches, elbows, pipe, etc.) are designed to connect with a simple clamp and gasket. When the clamp is tightened, it compresses the gasket between the pipe edges to form a fast, airtight seal.

The pipe comes in nominal 59" lengths which can be easily clamp-connected together to produce long runs. An adjustable sleeve pipe allows for easy length adjustments in the field.

Also, they all ship from our North Carolina factory in days, not weeks. This system is available in galvanized, stainless or painted steel and we offer a variety of finishes and coatings.

US Tubing is suitable for any application where welded pipe or bolted flanges are typically used.

---

### Modular System - Saves Time. Saves Money.

- Installs fast and reduces labor costs
- Modular system easy to modify existing system or add additional sections
- Adjustable clamp seals easy and tight every time
- Adjustable sleeve for simple length modifications (no need for special pipe lengths)

---

Ready to explore a project together?

336-904-0112

[info@us-tubing.com](mailto:info@us-tubing.com)

Connects Fast! Seals Completely!

The Ultimate Seal®



Fast Connect, Adjustable  
Clamp and V-Gasket



**Sliced View**  
Clamp compressing  
gasket on  
Vanstone ends

A Product of US Duct, Inc.  
P.O. Box 2537  
Kernersville, NC 27285

US Tubing  
Contact Information:

(855)-487-3828

[info@us-tubing.com](mailto:info@us-tubing.com)

[www.us-tubing.com](http://www.us-tubing.com)

Clamp-Connect or Flange-Connect Options!



A Product of US Duct, Inc.

The Ultimate Seal®

[www.us-tubing.com](http://www.us-tubing.com)

The Ultimate Seal®

## Bid Specifications

### Clamp

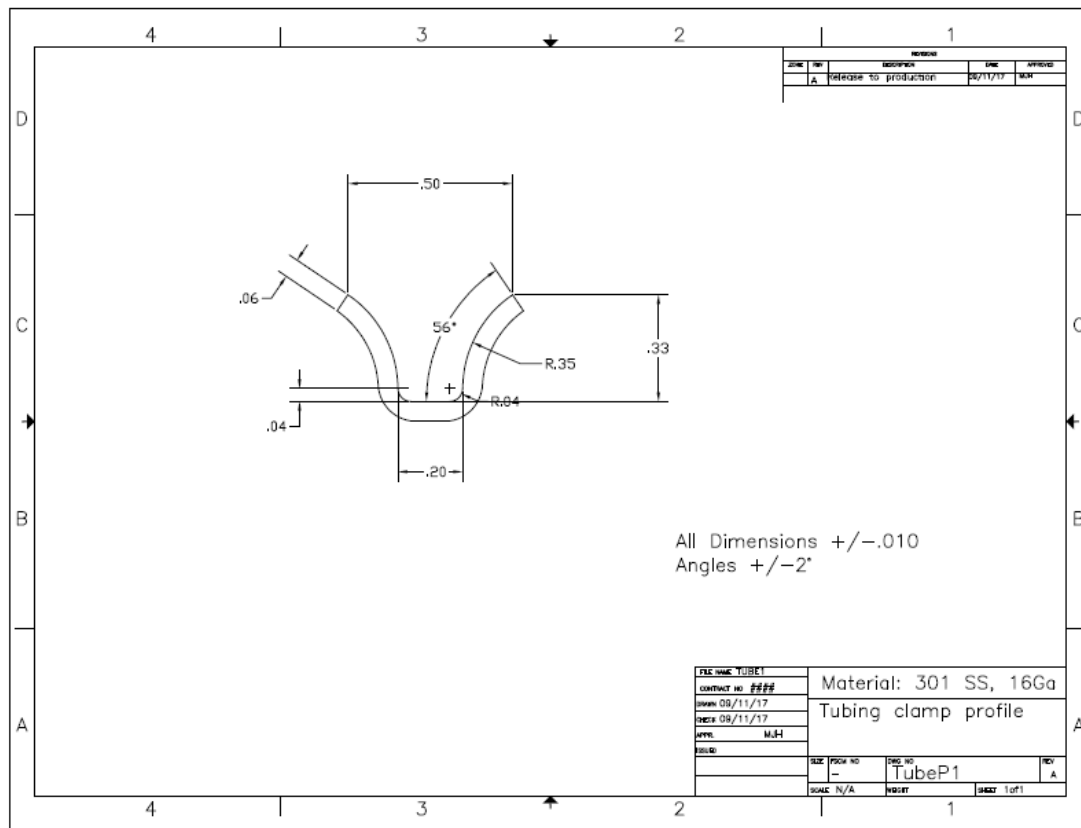


US Tubing's Clamp-Connect tubing is airtight, thanks to fully welded seams and fittings, and a clamp and gasket joining system.

Clamps are available in a over center handle with safety latch for positive or negative pressure systems.

The US Tubing clamp consists of a .060 (16 Gauge) 304 stainless steel custom contoured band with brackets spot welded onto it. The clamp is divided into two sections for easier installation. The two sections consist of a riveted latch, over-center handle with a spot-welded retention ring and an opposing bracket with a 1/4" socket head cap screw for tightening the clamp after assembly.

All clamps are made of type 304 2B Stainless Steel.



Clamp-Connect or Flange-Connect Options!



The Ultimate Seal<sup>®</sup>

*A Product of US Duct, Inc.*

[www.us-tubing.com](http://www.us-tubing.com)

The Ultimate Seal<sup>®</sup>

## US Tubing Elbows

90 Degree Lite Stitch Welded	90 degree Heavy Tubing	
	1XD CLR	1.5XD CLR
3"		CALL
4"	8 1/4"	10 1/4"
5"	9 3/4"	11 3/4"
6"	9 1/4"	13 1/4"



90° Stitchwelded US Tubing Elbow

90 Degree Heavy and Lite Segmented*	1XD CLR	1.5XD CLR	2XD CLR	2.5XD CLR
7"	8 3/4"	12 3/16"	15 9/16"	18 15/16"
8"	10 5/8"	14 15/16"	17 3/8"	21 3/16"
9"	10 5/8"	14 15/16"	19 1/4"	23 9/16"
10"	11 3/4"	16 5/8"	21 7/16"	26 5/16"
12"	13 3/4"	19 9/16"	25 7/16"	31 1/4"
14"	15 11/16"	22 9/16"	29 3/8"	36 3/16"
16"	17 9/16"	25 3/8"	33 1/8"	40 15/16"
18"	19 9/16"	28 5/16"	37 1/16"	45 7/8"



90° Segmented US Tubing Elbow

NOTE: For diameter 3-6", US Tubing Lite elbows are have collared ends.  
US Tubing Heavy have machined ends.

US Duct, Inc.  
P.O. Box 2537  
Kernersville, NC 27285

US Tubing  
Product Information:

(844) 487-8823

[info@us-tubing.com](mailto:info@us-tubing.com)

[www.us-tubing.com](http://www.us-tubing.com)

**Clamp-Connect or Flange-Connect Options!**



The Ultimate Seal®

A Product of US Duct, Inc.

[www.us-tubing.com](http://www.us-tubing.com)

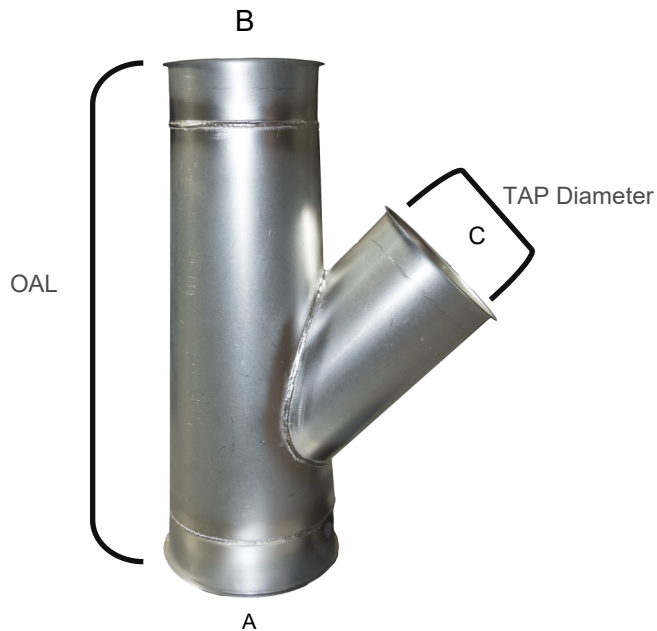
The Ultimate Seal®

## US Tubing Branches

Branch specification formulas.

**US Tubing Lite:**  $OAL = 2 \times C + 12 = OAL$ ; IF 30 degrees and Flanged on B or C, add 4" to OAL.

**US Tubing Heavy:**  $OAL = 2 \times C + 12 = OAL$ ; IF 30 degrees and Flanged on B and C, add 4" to OAL



US Duct, Inc.  
P.O. Box 2537  
Kernersville, NC 27285

US Tubing  
Product Information:

(844) 487-8823

[info@us-tubing.com](mailto:info@us-tubing.com)

[www.us-tubing.com](http://www.us-tubing.com)

Clamp-Connect or Flange-Connect Options!



The Ultimate Seal®



A Product of US Duct, Inc.

[www.us-tubing.com](http://www.us-tubing.com)

The Ultimate Seal®

## Bid Specifications - Angle Rings

Angle Ring Products List						
ID	Material	Material Type	Holes	Punch Size	Bolt circle	Net Weight Per Piece
3-1/16	10 Ga. Pressed	HR	6	9/32	4-5/16	0.70
4-1/16	10 Ga. Pressed	HR	6	9/32	5-5/16	0.85
5-1/16	10 Ga. Pressed	HR	6	9/32	6-5/16	1.20
6-3/32	1 x 1 x 1/8 HR Angle	HR	6	9/32	7-5/16	1.40
7-1/8	1-1/4 x 1-1/4 x 1/8 HR Angle	HR	6	3/8	8-1/2	2.00
8-1/8	1-1/4 x 1-1/4 x 1/8 HR Angle	HR	6	3/8	9-9/16	2.25
9-1/8	1-1/4 x 1-1/4 x 1/8 HR Angle	HR	6	7/16	10-5/8	2.50
10-1/8	1-1/2 x 1-1/2 x 1/8 HR Angle	HR	6	7/16	11-13/16	3.25
11-1/8	1-1/2 x 1-1/2 x 1/8 HR Angle	HR	6	7/16	12-3/4	3.50
12-1/8	1-1/2 x 1-1/2 x 1/8 HR Angle	HR	8	7/16	14	4.00
13-1/8	1-1/2 x 1-1/2 x 1/8 HR Angle	HR	8	7/16	15	4.25
14-1/8	1-1/2 x 1-1/2 x 1/8 HR Angle	HR	8	7/16	16	4.75
15-1/8	1-1/2 x 1-1/2 x 3/16 HR Angle	HR	8	7/16	17	7.50
16-1/8	1-1/2 x 1-1/2 x 3/16 HR Angle	HR	8	7/16	18	8.00
17-1/8	1-1/2 x 1-1/2 x 3/16 HR Angle	HR	8	7/16	19	8.25
18-1/8	1-1/2 x 1-1/2 x 3/16 HR Angle	HR	8	7/16	20	8.50
19-1/8	1-1/2 x 1-1/2 x 3/16 HR Angle	HR	12	7/16	20-3/4	8.75
20-1/8	1-1/2 x 1-1/2 x 3/16 HR Angle	HR	12	7/16	21-3/4	9.50
21-1/8	1-1/2 x 1-1/2 x 3/16 HR Angle	HR	12	7/16	22-3/4	10.25
22-1/8	1-1/2 x 1-1/2 x 3/16 HR Angle	HR	12	7/16	23-3/4	10.75
23-1/8	1-1/2 x 1-1/2 x 3/16 HR Angle	HR	12	7/16	24-7/8	11.25
24-1/8	1-1/2 x 1-1/2 x 3/16 HR Angle	HR	12	7/16	25-7/8	11.50
25-1/8	1-1/2 x 1-1/2 x 3/16 HR Angle	HR	16	7/16	26-7/8	12.10
26-1/8	2 x 2 x 3/16 HR Angle	HR	16	7/16	28-3/8	16.50
27-1/8	2 x 2 x 3/16 HR Angle	HR	16	7/16	29-3/8	16.75
28-1/8	2 x 2 x 3/16 HR Angle	HR	16	7/16	30-3/8	18.00
29-1/8	2 x 2 x 3/16 HR Angle	HR	16	7/16	31-3/8	18.75
30-1/8	2 x 2 x 3/16 HR Angle	HR	16	7/16	32-3/8	19.50
31-1/8	2 x 2 x 3/16 HR Angle	HR	16	7/16	33-3/8	19.75
32-1/8	2 x 2 x 3/16 HR Angle	HR	16	7/16	34-3/8	20.00

Clamp-Connect or Flange-Connect Options!



*A Product of US Duct, Inc.*

**The Ultimate Seal®**

[www.us-tubing.com](http://www.us-tubing.com)

**The Ultimate Seal®**

## US Tubing General Description and Technical Specifications

**General Description:** The US Tubing modular ducting is manufactured in Kernersville, North Carolina. The system consists of straight pipes and fittings where each part has an integral 5/16" (7.9 mm) 90-degree Vanstone edge or "lip" on each end. A gasket fits over one of the Vanstone ends at each joint and the two pipes or fittings are joined together using a stainless steel clamp with a v-shaped band. The clamp compresses the two pipe ends and the gasket together to provide an airtight seal. The Vanstone edge is turned directly onto all fittings. All seams are laser welded as "standard" but spot or stitch welds with epoxy seams are an option.

### Materials

Metal:

Galvanized Steel – G-90 to ASTM A 653 Type B Chem Dry. Working temperature less than 390 degrees Fahrenheit.

Stainless Steel –ASTM A240 Type 304 and T316—Working temperature maximum for 304 (intermittent) 800 degrees. Working temperature maximum for 316 (intermittent) 870 degrees.

Carbon Steel – HRP&) to ASTM A1011 Pickled and Oiled. Working temperature maximum 650 degrees Fahrenheit.

Clamps:

All clamps are made of type 304 2B Stainless Steel.

Gaskets:

The standard gaskets are made primarily from Ethylene-propylene Ethylidene Norbornene Terpolymer.

The material is compliant to FDA requirements.

Working Temperature up to 300 degrees Fahrenheit for brief periods.

Optional higher temperature and chemical resistant gaskets or available.

### Construction Methods

#### Straight Pipes

The standard length for a straight pipe is 59.25" (1505 mm)

All seams on straight pipes and branches are fully welded on standard US Tubing products to eliminate leakage.

The standard thickness is 16 gauge, except for 5" diameter where the standard is 14 gauge.

Optional 14, 18 and 20 gauge thicknesses are available.

#### Elbows

8" and smaller elbows are made from extruded tubes with Vanstone collars fully welded onto each end.

Standard 3" and 4" diameters are constructed from 16-gauge metal tube.

**Clamp-Connect or Flange-Connect Options!**



*A Product of US Duct, Inc.*

**The Ultimate Seal®**

[www.us-tubing.com](http://www.us-tubing.com)

**The Ultimate Seal®**

### **Elbows (cont.)**

5" diameter are constructed from 14 gauge metal.

Standard 6"-8" diameters are constructed from 14 gauge tube.

Optional welded segments, epoxy sealed gore locked and stitch welded elbows are available in lighter gauges.

The standard for elbows larger than 8" diameter, is fully welded segments.

16 gauge is standard, but optional 14 and 18 gauge thickness is available.

Optional epoxy sealed gore-locked elbows are available.

### **Fittings**

Standard fittings are fully welded and the Vanstone flange is turned directly onto the ends to eliminate the need for collars (and the possible leaks associated with them). As an option, spot welded fittings with epoxy-sealed seams are also available.

The standard angle for the "C" dimension or tap into a branch is 45-degrees, but 30-degree taps are available upon request.

The standard thickness for fittings is 16 gauge, though 14 gauge and 18 gauge thicknesses are available.

### **Clamps**

The US Tubing clamp consists of a .060 (16 Gauge) 304 stainless steel custom contoured band with brackets spot welded onto it. The clamp is divided into two sections for easier installation. The two sections consist of a riveted latch, over-center handle with a spot-welded retention ring and an opposing bracket with a 1/4" socket head cap screw for tightening the clamp after assembly.



A Product of US Duct, Inc.



*A Product of US Duct, Inc.*

[www.us-tubing.com](http://www.us-tubing.com)

The Ultimate Seal®

## Installation Guide

### A Few Tips to Make Your Installation Go Smoothly:

- Handle the ducting carefully to avoid damaging the Vanstone edges. Bent or damaged edges can result in system leakage.
- Lay your complete system out on the ground in the order it will be installed. This allows you to:
  - ⇒ Check to see if any system changes or obstructions will necessitate additional parts. If additional parts are needed, contact your US Tubing distributor immediately so that we can get the necessary parts to you quickly.
  - ⇒ Organize and identify all parts at ground-level for a much faster installation.
- Do as much work as possible at ground-level. This includes:
  - ⇒ Attaching a gasket to one end of each pipe section.
  - ⇒ Clamping two pieces together on the ground and then connecting these assemblies to complete the system.
  - ⇒ Be sure and tighten the adjustable clamp bolts before lifting these assemblies.

### Tools Required:

- A reciprocating saw or similar tool to cut ducts to length
- A power driver or impact wrench with a 1/4" Allen key for systems
- Tape measure

A PRODUCT OF US DUCT, INC.

4898 McCracken Rd, Kernersville, NC 27284 • PH: (844) 487-8823 • [info@us-tubing.com](mailto:info@us-tubing.com) • [www.us-tubing.com](http://www.us-tubing.com)



# Installation Instructions

1. Fit the gasket over **ONLY** one of the connecting flanges. The split in the gasket slides over the flange and the standing ribs of the gasket should be facing outward so that they clamp between the two pieces.

**NOTE: The gasket is supposed to be very snug.**

2. Abut the next piece of pipe against the gasket. There is only one gasket at each joint. (**Installation Tip:** Some installers spray the inside of the clamps with WD-40 or similar lubricant or use dish soap to coat the outside of the gaskets to help avoid any “bunching” or “dimpling” of the gaskets as the clamp is tightened.)
3. Place the clamp over and around the two ends of the connection. Make sure the v-shaped profile of the clamp fully encloses the end of each pipe and the gasket.
5. Close the clamp.

- a. Use a power driver or impact wrench with a 1/4” Allen bit to tighten the adjustment bolt opposite the clamp’s over-center handle to ensure a leak-proof seal. **NOTE: IF the gasket begins to bunch before the torque pulls the ends of the pipe together snugly, apply a lubricant such as WD-40 to the outside of the gasket before joining the pipes together.** This allows the clamp to slide over the gasket more easily.
- b. Once the clamp is closed, snap the wire retaining clip over the clamp handle to prevent accidental opening.



# US Tubing Adjustable Sleeve

**NOTE: Adjustable sleeves provide for easy field fitting where less than 5' of duct is required. Use of a sleeve is for negative systems only and can blow out under positive pressure.**

1. Measure the length needed to complete a shorter than 5' connection. For example, if you need 7' of pipe between two branches. As the standard pipe is 5' in length, you will need a 5' section and a two-foot length. Therefore,

2. Take a 5' section (1) and cut it slightly shorter than you need (2a). In this case where we need 2'. Cut it a little shorter than 24". (You can use a reciprocating saw, nibblers, or a grinding wheel). **IMPORTANT: There are two lengths of sleeves: 11" long and 4" long.** The shorter sleeve allow for shorter (under 11") requirements but also has less adjustment so cut carefully AND wisely.

3. Remove any sharp edges.

4. Take the cut piece of pipe and slide it into the adjustable sleeve (2b). **NOTE: Do not use your 4" sleeves where a 11" will work.** They should be reserved for shorter sections—if needed.

5. Slide the sleeve up and down on the pipe until the assembly is the length that you desire.

6. Roll the O-ring (comes with the sleeve) off the sleeve and onto the pipe and then roll it up against the Vanstone edge of the sleeve and clamp (3 is the completed assembly).

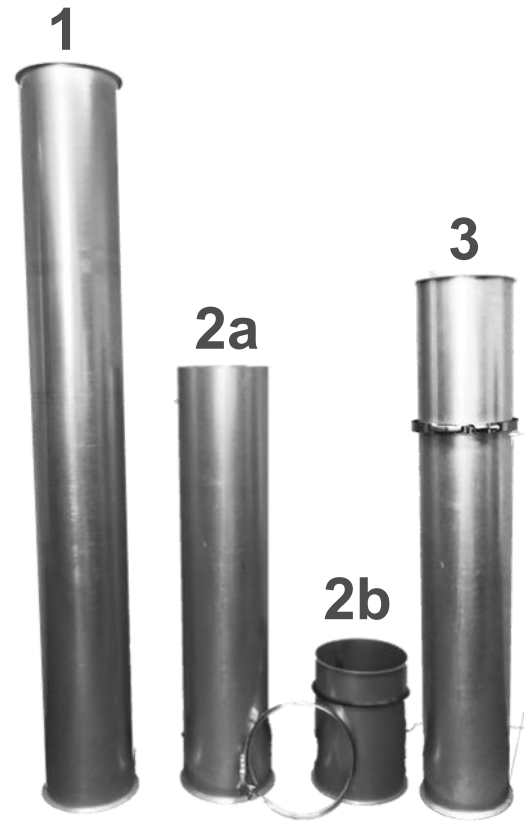
**NOTE: If the pipe assembly is too long or too short, un-clamp, adjust, and re-clamp.**

7. Tighten the adjustable bolt on the clamp to compress.

**While extremely tight, the adjustable sleeve is not guaranteed as leak-free for mist or coolant systems.** In the event that this part does leak, the customer has two options:

1. Use an off-the-shelf caulk to seal the part.

2. Send US Tubing an exact measurement of the telescoping piece. We will send you an exact length segment that can be snapped in to replace the telescoping adjustable sleeve section. The replacement part will not leak.



# Installation Tips For Mist Collection Systems

## Horizontal Runs

- Install horizontal runs at a slight incline (preferably towards the collector) to allow liquids to drain out of the duct.
- Install adjustable sleeves upstream (in reference to air movement) of the cut pipe for improved airflow and drainage.
- Ensure the duct is properly supported as liquids pooling in the duct can be extremely heavy.
- On long horizontal runs or where it is not possible to hang the duct with an incline to allow drainage, install taps or drains to keep liquids from pooling on low spots.



## Vertical Runs

- Install the adjustable sleeves below the cut sections of the pipe. This allows any liquids running down the inside of the pipe to flow all the way back to the machine without impediment.

## Notes on Adjustable Sleeve

- When installing the adjustable sleeve, ensure drainage flows in the direction from the cut pipe towards the adjustable sleeve.
- Make sure that the clamp connecting the adjustable sleeve to the cut pipe fully encloses the o-ring seal. Tighten the adjustable bolt on the clamp to compress the o-ring between the cut pipe and the adjustable sleeve.
- Once the exact lengths are determined, some installers prefer to measure the entire adjustable section and contact us for a made-to-order single length of pipe. An exact length of solid pipe offers the maximum leak security.

**We also offers Oil Mist Accumulators. These cost effective units help scrub the oil from the air at the source and lower the volume of liquid in the duct.**

## Contact Us

Give us a call for more information about our services and products!

**US Duct, Inc.**  
4898 McCracken Rd  
Kernersville, NC 27284

US Tubing Product  
Information:

(844) 487-8823

[Info@us-tubing.com](mailto:Info@us-tubing.com)

Visit us on the web at  
[www.us-tubing.com](http://www.us-tubing.com)

**CLAMP TOGETHER DUCT SYSTEMS**

# **VANSTONE EDGE LASER WELDED CLAMP TOGETHER DUCT**

*US TUBING, OUR AIRTIGHT, LEAK FREE CLAMP  
CONNECTION PRODUCT IS THE ULTIMATE SEAL®*



**US-DUCT.COM | 855-487-3828**

US Tubing, our airtight Clamp Together System is a modular, laser welded, clamp-and-gasket joining system that is guaranteed to be leak-free. Each component terminates in a Vanstone edge (a 5/16" turned out lip) that allows it to be joined to the next piece using a fully encompassing sealing gasket and high strength clamp. An adjustable sleeve pipe allows for infinite adjustments in the field. The components (pipe, branches, elbows, etc.) are offered in a 'light' and 'heavy' standard gauges ranging from 22-18. Custom gauges and materials are available to fit your application, as well.



Meet Myles: [wwwTheUltimateSeal.com](http://www.TheUltimateSeal.com)



Tubing Lite			
Dia	Base#	Options	ga
4"	TL03	Available in Galvanized and SS	22
5"	TL03		22
6"	TL03		22
7"	TL03		22
8"	TL03		22
9"	TL03		22
10"	TL04		22
12"	TL04		22
14"	TL04		22
16"	TL04		22
18"	TL05		22

Tubing Heavy			
Dia	Base#	Options	GA
4"	TH04	Available in Galvanized and SS	16T
5"	TH05		20
6"	TH06		20
7"	TH07		18
8"	TH08		18
9"	TH09		18
10"	TH10		18
12"	TH12		18
14"	TH14		18
16"	TH16		18
18"	TH18		18



V-Gasket

Clamp	
Dia.	Base #
4"	TCLOC04
5"	TCLOC05
6"	TCLOC06
7"	TCLOC07
8"	TCLOC08
9"	TCLOC09
10"	TCLOC10
12"	TCLOC12
14"	TCLOC14
16"	TCLOC16
18"	TCLOC18

Adjustable Sleeve w/ O-ring		
Dia.	Base #	Options
4"	TLAS04	Available in Galvanized and SS
5"	TLAS05	
6"	TLAS06	
7"	TLAS07	
8"	TLAS08	
9"	TLAS09	
10"	TLAS10	
12"	TLAS12	
14"	TLAS14	
16"	TLAS16	
18"	TLAS18	



V-Gasket on pipe



Pipe assembly with V-Gasket before clamp is applied

Gaskets for Lite Tubing			
Dia.	EPDM	Silicon	Viton
	Base #	Base #	Base #
4"	TGLEPDM04	TGLS04	TGLV04
5"	TGLEPDM05	TGLS05	TGLV05
6"	TGLEPDM06	TGLS06	TGLV06
7"	TGLEPDM07	TGLS07	TGLV07
8"	TGLEPDM08	TGLS08	TGLV08
9"	TGLEPDM09	TGLS09	TGLV09
10"	TGLEPDM10	TGLS10	TGLV10
12"	TGLEPDM12	TGLS12	TGLV12
14"	TGLEPDM14	TGLS14	TGLV14
16"	TGLEPDM16	TGLS16	TGLV16
18"	TGLEPDM18	TGLS18	TGLV18

Gaskets for Heavy Gauge Tubing			
Dia.	EPDM	Silicon	Viton
	Base #	Base #	Base #
4"	TGHEPDM04	TGHS04	TGHV04
5"	TGHEPDM05	TGHS05	TGHV05
6"	TGHEPDM06	TGHS06	TGHV06
7"	TGHEPDM07	TGHS07	TGHV07
8"	TGHEPDM08	TGHS08	TGHV08
9"	TGHEPDM09	TGHS09	TGHV09
10"	TGHEPDM10	TGHS10	TGHV10
12"	TGHEPDM12	TGHS12	TGHV12
14"	TGHEPDM14	TGHS14	TGHV14
16"	TGHEPDM16	TGHS16	TGHV16
18"	TGHEPDM18	TGHS18	TGHV18

## Tubing Elbows- Lite



Segmented Clamp-Connect Elbow

Stitch Welded Clamp-Connect Elbow

Clamp-Connect Tube Elbow

Tubing (Lite) 1xD Elbows							
Dia.	90 deg	60 deg	45 deg	30 deg	GA	Options	
	Base#	Base#	Base#	Base#			
4"	TLESD0490	TLESD0460	TLESD0445	TLESD0430	22	Available in Galvanized	Stitch Welded
5"	TLESD0590	TLESD0560	TLESD0545	TLESD0530	22		
6"	TLESD0690	TLESD0660	TLESD0645	TLESD0630	22		
7"	TLESD0790	TLESD0760	TLESD0745	TLESD0730	22		
8"	TLESD0890	TLESD0860	TLESD0845	TLESD0830	22		
9"	TLESD0990	TLESD0960	TLESD0945	TLESD0930	22		
10"	TLESD1090	TLESD1060	TLESD1045	TLESD1030	22		
12"	TLESD1290	TLESD1260	TLESD1245	TLESD1230	22		
7"	TLEGD0790	TLEGD0760	TLEGD0745	TLEGD0730	20	Available in Galvanized and SS	Gore Locked
8"	TLEGD0890	TLEGD0860	TLEGD0845	TLEGD0830	20		
9"	TLEGD0990	TLEGD0960	TLEGD0945	TLEGD0930	20		
10"	TLEGD1090	TLEGD1060	TLEGD1045	TLEGD1030	20		
12"	TLEGD1290	TLEGD1260	TLEGD1245	TLEGD1230	18		
14"	TLEGD1490	TLEGD1460	TLEGD1445	TLEGD1430	18		
16"	TLEGD1690	TLEGD1660	TLEGD1645	TLEGD1630	18		
18"	TLEGD1890	TLEGD1860	TLEGD1845	TLEGD1830	18		

US Duct provides US Tubing elbows that fit applications requiring air tight elbows for wet, food and positive pressure applications. Our standard duct elbow radii are 1.5 and 2.5 x D but we can make any radii needed.

**Segmented tubing elbows** are joined by welding. US Duct has a complete line of segmented elbows in all gauges and radii, and galvanized, stainless steel and carbon steel forms.

**Stitch welded elbows**, or "stitched halves", are galvanized metal elbows that are stamped out using mechanical presses and forming dies, resulting in a very tight elbow. The stamping process does limit the gauges that can be used with this kind of elbow, so when using larger sizes, the application should be limited to light dust or air.

**Tubed duct elbows** are an excellent choice for paper trim and oil mist applications, because they have no seam. Instead, these galvanized or stainless steel elbows are mechanically bent, resulting in a non-seamed tubing.

Tubing Elbows- Lite

Tubing (Lite) 1.5xD Elbows							
Dia.	90 deg	60 deg	45 deg	30 deg	GA	Options	
	Base#	Base#	Base#	Base#			
4"	TLESS0490	TLESS0460	TLESS0445	TLESS0430	22	Available in Galvanized	Stitch Welded
5"	TLESS0590	TLESS0560	TLESS0545	TLESS0530	22		
6"	TLESS0690	TLESS0660	TLESS0645	TLESS0630	22		
7"	TLESS0790	TLESS0760	TLESS0745	TLESS0730	22		
8"	TLESS0890	TLESS0860	TLESS0845	TLESS0830	22		
9"	TLESS0990	TLESS0960	TLESS0945	TLESS0930	22		
10"	TLESS1090	TLESS1060	TLESS1045	TLESS1030	22		
12"	TLESS1290	TLESS1260	TLESS1245	TLESS1230	22		
4"	TLETS0490	TLETS0460	TLETS0445	TLETS0430	16	Available in Galvanized and SS	Tubed
5"	TLETS0590	TLETS0560	TLETS0545	TLETS0530	14		
6"	TLETS0690	TLETS0660	TLETS0645	TLETS0630	14		
8"	TLETS0890	TLETS0860	TLETS0845	TLETS0830	14		
7"	TLEGS0790	TLEGS0760	TLEGS0745	TLEGS0730	20	Available in Galvanized and SS	Gore Locked
8"	TLEGS0890	TLEGS0860	TLEGS0845	TLEGS0830	20		
9"	TLEGS0990	TLEGS0960	TLEGS0945	TLEGS0930	20		
10"	TLEGS1090	TLEGS1060	TLEGS1045	TLEGS1030	20		
12"	TLEGS1290	TLEGS1260	TLEGS1245	TLEGS1230	20		
14"	TLEGS1490	TLEGS1460	TLEGS1445	TLEGS1430	18		
16"	TLEGS1690	TLEGS1660	TLEGS1645	TLEGS1630	18		
18"	TLEGS1890	TLEGS1860	TLEGS1845	TLEGS1830	18		



Visit [www.TheUltimateSeal.com](http://www.TheUltimateSeal.com) for more information!



Tubing (Lite) 2.5xD Elbows							
Dia.	90 deg	60 deg	45 deg	30 deg	GA	Options	
	Base#	Base#	Base#	Base#			
4"	TLETL0490	TLETL0490	TLETL0445	TLETL0430	16	Available in Galvanized and SS	Tubed
5"	TLETL0590	TLETL0590	TLETL0545	TLETL0530	14		
6"	TLETL0690	TLETL0690	TLETL0645	TLETL0630	14		
8"	TLETL0890	TLETL0890	TLETL0845	TLETL0830	14		
7"	TLEGL0790	TLEGL0790	TLEGL0745	TLEGL0730	20	Available in Galvanized and SS	Gore Locked
8"	TLEGL0890	TLEGL0890	TLEGL0845	TLEGL0830	20		
9"	TLEGL0990	TLEGL0990	TLEGL0945	TLEGL0930	20		
10"	TLEGL1090	TLEGL1090	TLEGL1045	TLEGL1030	20		
12"	TLEGL1290	TLEGL1290	TLEGL1245	TLEGL1230	20		
14"	TLEGL1490	TLEGL1490	TLEGL1445	TLEGL1430	18		
16"	TLEGL1690	TLEGL1690	TLEGL1645	TLEGL1630	18		
18"	TLEGL1890	TLEGL1890	TLEGL1845	TLEGL1830	18		

Tubing Elbows- Heavy

Tubing (Hvy) 1xD							
Dia.	90 deg	60 deg	45 deg	30 deg	GA	Options	
	Base#	Base#	Base#	Base#			
7"	THEGD0790	THEGD0760	THEGD0745	THEGD0730	18	Available in Galvanized and SS	Gore Locked
8"	THEGD0890	THEGD0860	THEGD0845	THEGD0830	18		
9"	THEGD0990	THEGD0960	THEGD0945	THEGD0930	18		
10"	THEGD1090	THEGD1060	THEGD1045	THEGD1030	18		
12"	THEGD1290	THEGD1260	THEGD1245	THEGD1230	18		
14"	THEGD1490	THEGD1460	THEGD1445	THEGD1430	18		
16"	THEGD1690	THEGD1660	THEGD1645	THEGD1630	18		
18"	THEGD1890	THEGD1860	THEGD1845	THEGD1830	18		

Tubing (Hvy) 1.5xD							
Dia.	90 deg	60 deg	45 deg	30 deg	GA	Options	
	Base#	Base#	Base#	Base#			
4"	THETS0490	THETS0460	THETS0445	THETS0430	18	Available in Galvanized and SS	Tubed
5"	THETS0590	THETS0560	THETS0545	THETS0530	18		
6"	THETS0690	THETS0660	THETS0645	THETS0630	18		
8"	THETS0890	THETS0860	THETS0845	THETS0830	18		
7"	THEGS0790	THEGS0760	THEGS0745	THEGS0730	18	Available in Galvanized and SS	Gore Locked
8"	THEGS0890	THEGS0860	THEGS0845	THEGS0830	18		
9"	THEGS0990	THEGS0960	THEGS0945	THEGS0930	18		
10"	THEGS1090	THEGS1060	THEGS1045	THEGS1030	18		
12"	THEGS1290	THEGS1260	THEGS1245	THEGS1230	18		
14"	THEGS1490	THEGS1460	THEGS1445	THEGS1430	18		
16"	THEGS1690	THEGS1660	THEGS1645	THEGS1630	18		
18"	THEGS1890	THEGS1860	THEGS1845	THEGS1830	18		

Tubing (Hvy) 2.5xD							
Dia.	90 deg	60 deg	45 deg	30 deg	GA	Options	
	Base#	Base#	Base#	Base#			
4"	THETL0490	THETL0460	THETL0445	THETL0430	16	Available in Galvanized and SS	Tubed
5"	THETL0590	THETL0560	THETL0545	THETL0530	14		
6"	THETL0690	THETL0660	THETL0645	THETL0630	14		
8"	THETL0890	THETL0860	THETL0845	THETL0830	14		
7"	THEGL0790	THEGL0760	THEGL0745	THEGL0730	18	Available in Galvanized and SS	Gore Locked
8"	THEGL0890	THEGL0860	THEGL0845	THEGL0830	18		
9"	THEGL0990	THEGL0960	THEGL0945	THEGL0930	18		
10"	THEGL1090	THEGL1060	THEGL1045	THEGL1030	18		
12"	THEGL1290	THEGL1260	THEGL1245	THEGL1230	18		
14"	THEGL1490	THEGL1460	THEGL1445	THEGL1430	18		
16"	THEGL1690	THEGL1660	THEGL1645	THEGL1630	18		
18"	THEGL1890	THEGL1860	THEGL1845	THEGL1830	18		



### Tubing Branches



#### Tubing Lite Branches

Single Branch				Double Branch				Wye-Branch				In-cuts				Reducers			
Base# (xx=deg)(30-45-90)				Base# (xx=deg)(30-45-90)				Base# (xx=deg)(30-45)				Base# (xx=deg)(30-45)				Base# (xx=deg)(30-45)			
Dia.	Base #	Options	GA	Dia.	Base #	Options	GA	Dia.	Base #	Options	GA	Dia.	Base #	Options	GA	Dia.	Base #	Options	GA
4"	TLBL04	Available in Galvanized and SS	18	4"	TLBD04	Available in Galvanized and SS	18	4"	TLBY03	Available in Galvanized and SS	18	4"	TLBN04	Available in Galvanized and SS	18	4"	TLR04	Available in Galvanized and SS	22
5"	TLBL05		18	5"	TLBD05		18	5"	TLBY04		18	5"	TLBN05		18	5"	TLR05		20
6"	TLBL06		18	6"	TLBD06		18	6"	TLBY05		18	6"	TLBN06		18	6"	TLR06		20
7"	TLBL07		18	7"	TLBD07		18	7"	TLBY06		18	7"	TLBN07		18	7"	TLR07		18
8"	TLBL08		18	8"	TLBD08		18	8"	TLBY07		18	8"	TLBN08		18	8"	TLR08		18
9"	TLBL09		18	9"	TLBD09		18	9"	TLBY08		18	9"	TLBN09		18	9"	TLR09		18
10"	TLBL10		18	10"	TLBD10		18	10"	TLBY09		18	10"	TLBN10		18	10"	TLR10		18
12"	TLBL12		18	12"	TLBD12		18	12"	TLBY11		18	12"	TLBN12		18	12"	TLR12		18
14"	TLBL14		18	14"	TLBD14		18	14"	TLBY13		18	14"	TLBN14		18	14"	TLR14		18
16"	TLBL16		18	16"	TLBD16		18	16"	TLBY15		18	16"	TLBN16		18	16"	TLR16		18
18"	TLBL18	18	18"	TLBD18	18	18"	TLBY17	18	18"	TLBN18	18	18"	TLR18	18					



#### Tubing Heavy Branches

Single Branch				Double Branch				Wye-Branch				In-cuts				Reducers			
Base# (xx=deg)(30-45-90)				Base# (xx=deg)(30-45-90)				Base# (xx=deg)(30-45)				Base# (xx=deg)(30-45)				Base# (xx=deg)(30-45)			
Dia.	Base #	Options	GA	Dia.	Base #	Options	GA	Dia.	Base #	Options	GA	Dia.	Base #	Options	GA	Dia.	Base #	Options	GA
4"	THBL04	Available in Galvanized and SS	18	4"	THBD04	Available in Galvanized and SS	18	4"	THBY04	Available in Galvanized and SS	18	4"	THBN04	Available in Galvanized and SS	18	4"	THR04	Available in Galvanized and SS	18
5"	THBL05		18	5"	THBD05		18	5"	THBY05		18	5"	THBN05		18	5"	THR05		18
6"	THBL06		18	6"	THBD06		18	6"	THBY06		18	6"	THBN06		18	6"	THR06		18
7"	THBL07		18	7"	THBD07		18	7"	THBY07		18	7"	THBN07		18	7"	THR07		18
8"	THBL08		18	8"	THBD08		18	8"	THBY08		18	8"	THBN08		18	8"	THR08		18
9"	THBL09		18	9"	THBD09		18	9"	THBY09		18	9"	THBN09		18	9"	THR09		18
10"	THBL10		18	10"	THBD10		18	10"	THBY10		18	10"	THBN10		18	10"	THR10		18
12"	THBL12		18	12"	THBD12		18	12"	THBY12		18	12"	THBN12		18	12"	THR12		18
14"	THBL14		18	14"	THBD14		18	14"	THBY14		18	14"	THBN14		18	14"	THR14		18
16"	THBL16		18	16"	THBD16		18	16"	THBY16		18	16"	THBN16		18	16"	THR16		18
18"	THBL18	18	18"	THBD18	18	18"	THBY18	18	18"	THBN18	18	18"	THR18	18					